

## ALFOS – LPR (LICENSE PLATE RECOGNITION)



### MAIN CHARACTERISTICS AND BENEFITS ALFOS LPR

- Vehicle license plate recognition software - cars, trucks, and motorcycles
- Recognition of license plates of moving vehicle
- High level of accuracy\*
- Suitable to operate with any IP\*\* camera installed over TCP/IP networks
- Quick access to the vehicle information directly from the main capture screen
- Registration lists of suspicious vehicles, authorized vehicles, and vehicles for opening gates
- Automation for opening gates for registered license plates
- System registration for users and administrators
- Immediate alerts on the monitoring screens based on vehicle registration lists
- Quick search through filters on approximated and exact recorded values, such as date, list, content (number, letter, letter/number), operator/user
- Quick inclusion of new vehicles with one simple step
- Detailed capture records – License plate, Image, Date, Location, User, Alert Recognition and Registration List
- Easy installation and easy operation
- Software native for Brazil and Mercosur license plate formats
- Integrated with Pelco's VMS VideoXPert™

\* Based on the requirements of the cameras, fixing and illumination

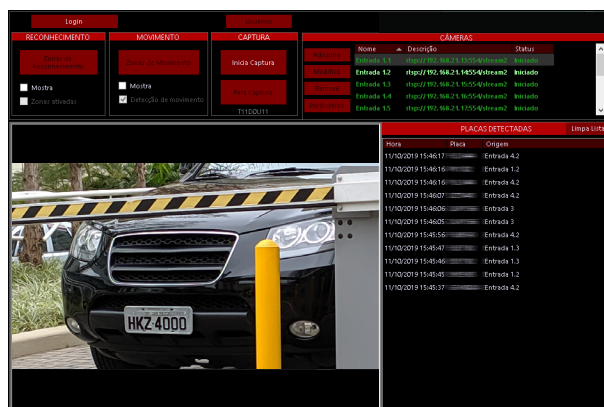
\*\* Check the minimum features required for the cameras

### ABOUT THE PRODUCT

Alfos LPR is a vehicle license plate capture software especially developed in Brazil by Alfasistema to meet the most challenging demands in monitoring and control of the most various segments.

Through a reliable and secure technology, Alfes LPR allows the capture and recognition of license plate in high precision through commonly-used IP cameras, as well as identifying and storing vehicle and motorcycles license plates in databases, reducing time and resources in dealing with operations related to the emergency or risk situations.

Alfos LPR allows you to add the license plate and vehicle attributes into existing lists of suspicious vehicles, authorized vehicles, or for grating access through gates.



SECURE PRACTICAL RELIABLE EFFICIENT

It also allows a quick search through filters on approximated and exact recorded values, such as date, list, content (number, letter, letter/number), operator/user.

Through the existing registration lists, Alfes LPR can generate audible and pop-up alerts, presenting the information of the registered vehicle promptly on the screen.

### CUSTOMIZATION

The software can operate exclusively with the on-site cameras or be integrated with other systems, such as parking automation system (since there is previous knowledge of the API's).

According to the needs of the client or the site, Alfes LPR may have customized features, such as list creation and attributes, screens, shortcut buttons, formats of specific countries' plates, etc. Brazil and Mercosur license plates formats are native of the software.

With Alfes LPR, your enterprise will have a cutting-edge software, a smart solution capable of managing vehicle license plates with fast and accurate data analyses for better decision making. Furthermore, a high-skilled and specialized team in video monitoring and security offers an effective and agile consulting for the best use of all features of Alfes LPR software.

## BENEFITS

Alfos LPR provides significant productivity gains thanks to the software's advanced search system that is able to reduce hours of image search of any CCTV system, where the search is made from camera to camera within time intervals, occasionally unknown or not accurate. With this feature, in case of urgent events, Alfos LPR can quickly and accurately provide recorded data regarding the access of a specific vehicle.

Besides, Alfos LPR turns the monitoring operation more efficient through its features in the search process and in the alerts that may be generated, providing superior convenience and efficiency. These attributes make Alfos LPR the perfect tool for application in Shopping Centers, Malls, Corporate Buildings or Condominiums, Logistics Centers, Industrial Parks, among others.

## MINIMUM SPECIFICATIONS FOR ALFOS LPR MANAGEMENT SYSTEM

Parameter	2 to 5 cameras	6 to 9 cameras	10 to 15 cameras
Processor	Intel® Core™ i5-8400 (2.8GHz expandable)	Intel® Core™ i7-8700 (3.2GHz expandable)	Xeon E5-2683 v3, Xeon E5-1680 v4, Xeon W-2145, Xeon D-2183IT, or equivalent 8 cores / 2 threads minimum.
Memory	8GB	16GB	
OS Drive	1x Hard Disk de 1TB (7200 RPM)		
Vídeo System*	1280x960, 128MB Memory		
Operacional System	Windows 10 Pro. 64 bits		

\* Necessary if monitoring is executed by the system manager.

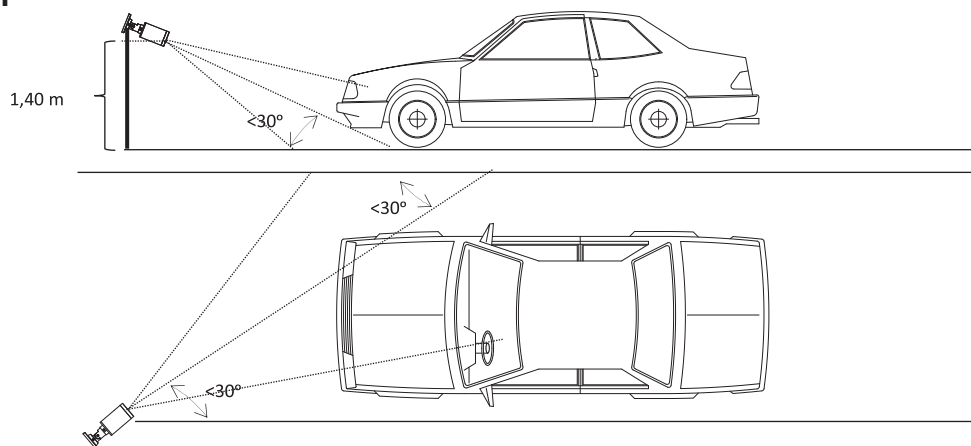
# TECHNICAL SPECIFICATION

## RECOMMENDED OPERATING CONDITIONS

### Cameras

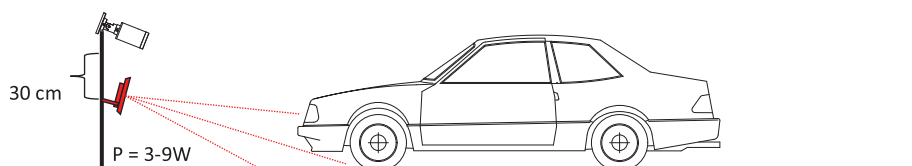
- Minimum Resolution: 800x600 @8fps (15 pixels for the capture of plate's character)
- Shutter: 1 ~ 1/3000 (manually adjustable)
- Sensitivity: Color - 0.05 Lux
- WDR (Wide Dynamic Range): 90dB
- Varifocal: within the range of 2.8 to 12mm (0,1102 to 0,4724 inches)

### Installation

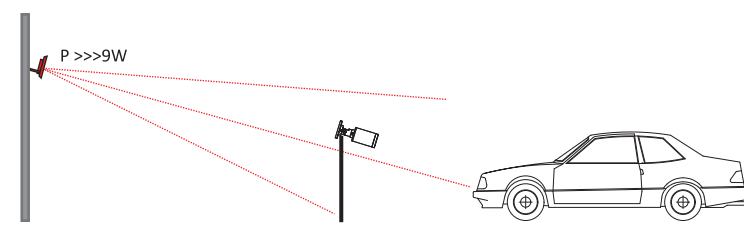


### Illumination (Recommended Positioning):

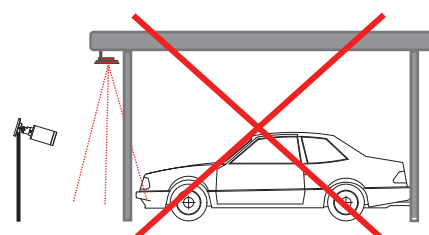
- Close to the Camera:
  - Spotlight of White LED
  - Power: 3 to 9W
    - Fixing: 30 cm (11,81 inches) below the camera (based on the camera installation requirements)
    - Light Focus: indirect. Do not point straight to plate. Make it as diffuse as possible.



- Far from camera positioning:
  - Power: >>>9 W (run on-site testing)
    - Fixing: outside the range of the camera
    - Light Focus: focus on the vehicle (check light impact on the driver).



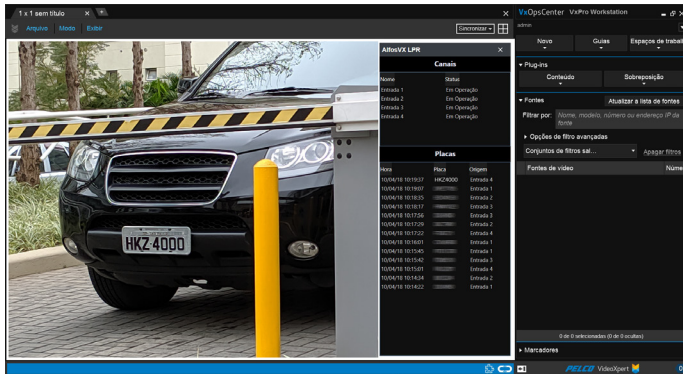
Note:



# TECHNICAL SPECIFICATION

## INTEGRATION WITH PELCO VideoXpert™

Alfos LPR has a plugin for integration with VMS VideoXPert™\*, making it an integrated part of the video management system on the monitoring screens, ensuring superior agility and convenience in the monitoring management.



Alfos LPR integrated at OPS Center

\* VideoXPert™ is an optional plugin and its use may involve extra costs.